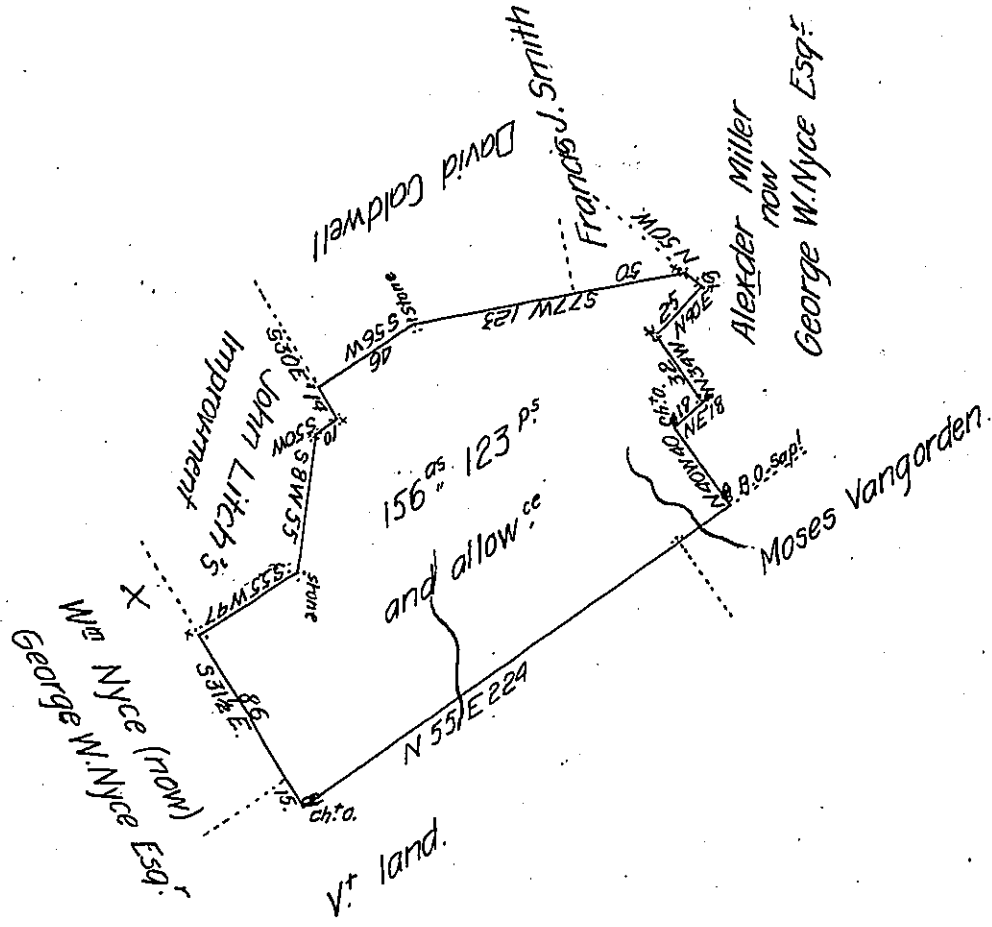


Lehman -
PIKE

✓



In pursuance of a warrant dated the 5th day of May 1794. Surveyed the 29th day of January 1812. To Henry Steel the above Described Tract of land Including a Small Water Ash Swamp, about three Quarters of a mile from the Delaware River in Delaware Township Wayne County County Containing one hundred and fifty six - & one hundred & twenty three ~~Twenty three acres and seventy two perches and allowance of Six P^r. 0^t & c^s.~~

To Andrew Porter, Esquire

P^r Jn^r. Brink D.S.

Surveyor General of Penn^a

IN TESTIMONY that the above is a copy of the original remaining on file in the Department of Internal Affairs of Pennsylvania, made conformably to an Act of Assembly approved the 16th day of February, 1833, I have hereunto set my Hand and caused the Seal of said Department to be affixed at Harrisburg, this Tenth day of December 1906

Isaac R. Brown
Secretary of Internal Affairs.